

Learn Continuously There's always
"One more thing to Learn"



LEARN

To Acquire Wisdom One must
"Practice Consistently"



ACQUIRE

INVEST NOW IN THE

Most
Bankable
Asset

FOR A BRIGHT FUTURE



ATTAIN



To Attain Success
Go Beyond "Me Thinking"

TRANSFORM



Transformation of
Average into "Excellence"

**INFORMATION
BROCHURE**

AN
MBA
IS HIRED FOR
ATTITUDE
AND PAID FOR
SKILLS
WE DEVELOP BOTH

Ranked Among
Top 75 B-Schools
in India by
"Business Today"
Magazine

PGCET
COLLEGE
CODE
B135MB



BHARATESH EDUCATION TRUST

BC - 188, Old PB. Road, Near Fort, Belagavi - 590016.

Website : www.bharatesh.in E-mail : info@bharatesh.in

Contact No. 0831-2426984/5/6 & 4202634



60 years

3 Campuses

One Pursuit

Total students Graduated from our Institutions

SSLC 12,601

PUC 821

ITI 1,921

Diploma 3,444

A.N.M. 64

UNDER GRADUATES - 3440

B.Com 193

B.B.A. 856

B.C.A. 694

B.Sc (Nurs) 223

B.H.M.C. 1410

POST GRADUATES - 592

M.D (Hom) 251

M.B.A. 313

M.Sc (Nurs) 28

Ph.D research is also taken up at our campus

Numbers Count, Success Matters

Reasons why
some of the brilliant
students choose **BHARATESH**

40 acres



In 3 Campus

4 lacs sq.ft.



Buildup Area

126 lacs



Scholarships
(Corpus Fund)

62 lacs



Scholarships
(Dispersed Fund)

7,431



Students

800



Staff
(Teaching, Non-Teaching
& Visiting)

11,734



Trained Under
Skill Development
Program

About BET

Bharatesh Education Trust (BET) is celebrating its DIAMOND JUBILEE in the current year 2022. It was established in the year 1962 under the Bombay Public Trust act 1950 {Registration No. 254(BGM)}. Started by a group of enthusiastic entrepreneurs, the trust's branches are wide spread across 21 educational institutions which include North Karnataka's renowned Motichand Lengade Bharatesh Polytechnic, Homeopathic medical college and Hospital, Nursing college, MBA, BBA, BCA, B.Com Courses, Kannada, Marathi and English Schools and the CBSE schools. The primary objective of the trust is to impart supreme quality education to the poor, needy and rural students in and around Belagavi. BET is governed by 15 member managing committee. It comprises of industrialists, engineers, businessmen, educationist, judge, advocates and social workers who are highly experienced, managing large-scale industries and business houses in Belagavi.

Vision

To impart outstanding need and value based education to enable the student to face Global Competition.

Mission

To empower its human resources and provide adequate facilities to impart valuable knowledge across all disciplines.

About BETGBS

Bharatesh Education Trust's Global Business School (BETGBS), Belagavi is ranked among the Best 100 B-Schools in India by several national publications like The Week, Business world, Dalal Street, etc. Affiliated to Rani Channamma University, Belagavi and approved by AICTE, New Delhi and recognized by Government of Karnataka. It had been accredited by NAAC and was the only standalone MBA college in North Karnataka to have this distinction.

Bharatesh MBA program is identified with strong industry-centric curriculum and host of activities that shape a student's personality. It has been a pioneer in inviting guests like CEOs and Presidents of MNCs, to world-famous authors, entrepreneurs and artists. It also pioneered the concept of organizing relevant national conferences like the HR Conclave, the National Seminar on E-commerce, MDP by Nandini Vaidyanathan, etc. and industry visits to MNCs like Volkswagen, Fiat Automobiles, Ford, Nestle India, Zee TV, BHEL, etc.

We follows a rigorous Pre-placement training every single day in class, combined with expert counseling, industry visits, mock tests and interviews, guidance from industry experts and more. Our Placement record has been glorious with students placed in top national and international companies like KPMG, Ernst & Young, BNY Mellon, Online Instruments, Accenture, etc. Every student gets multiple opportunities to attend interviews.

The college provides numerous opportunities for students to earn while they learn through event management assignments, stipend oriented internships, gig work and the like

Vision

Imparting quality education and skills to students to make them exemplary future business leaders. Involve in quality research and consultancy of global standards to industry and community in order to bring social transformation.

Mission

Providing infrastructure, inducing discipline and dedication in students to face global Challenges Developing and utilizing the expertise of the faculty to undertake research and consultancy of global standards.

GOVERNING COUNCIL

Shri Vinod Doddanavar
DB Enterprises
Chairman

Shri Gopal Jinagouda
Jinabakul, Forge Pvt.Ltd.
Member

Shri Rajeev Doddanavar
Partner DB Enterprise
Member

Shri Bhushan Mirji
Manickbag Automobiles
Member

Shri Mahaveer Upadhye
Yashwant Industries
Member

Shri Deepak Dhadoti
Servo Controls
Member

Mrs Anupama Shirahatti
Jain Engineering
Member

Shri Sourabh Doddanavar
Abhinandan Foods
Member

Dr Prasad Daddikar
BETGBS
Secretary

Chairman's Message



Shri Mahaveer Upadhye
Chairman
Governing Council

At the outset I congratulate you for taking this step forward to enhance your career with a professional qualification. At BETGBS you shall discover the world of opportunities through our focused, enriched and collaborative academic learning atmosphere that enables you to accomplish your goals.

In addition to the university syllabus, MBA programme at BETGBS is structured as per the contemporary corporate requirements, best practices in the world and whole lot of extra- curricular activities which facilitates every student to an overall personality development and brings about a treasured B-school experience.

We have a strong intellectual capital base, thanks to the presence of a highly-qualified and experienced faculty members comprising industry professionals and academic scholars. Our students and alumni facilitate credibility to our claims of academic excellence by securing consistent ranks to the university since 2012 for MBA programme.

I on my personal and behalf of Governing Council of the institution, wish you all the best in your MBA education endeavor to gain professional skills and shall look forward to welcoming you in our institute.

Director's Message

I welcome the student fraternity, corporate community, our celebrated alumni, and well-wishers to BETGBS, Belagavi.

Since its commencement in 2009, the institute has continuously built on its vision of imparting quality education and skills to students to make them exemplary future business leaders in order to bring a social transformation.

The BETGBS MBA will empower you to:

LEARN about emerging and creative corporate practices, unique economic models, digital technological influence on business policies, and how professional business leaders can capitalize on the opportunities to initiate innovation and profitable growth for sustainability.

ACQUIRE applied professional skills that will help you grow and build businesses, anything from start-ups to long-established organizations for social development.

ATTAIN a comprehensive understanding of the global economic, environmental and social challenges cum prospects that are redefining corporate culture and the role of the professional business leaders.

TRANSFORM your future. Explore new dimensions, learn and develop your own potential, and become the leader and the person that you truly want to be.

Best wishes to everyone who is part of the BETGBS family and it will be a pleasure to add more in the days to come.



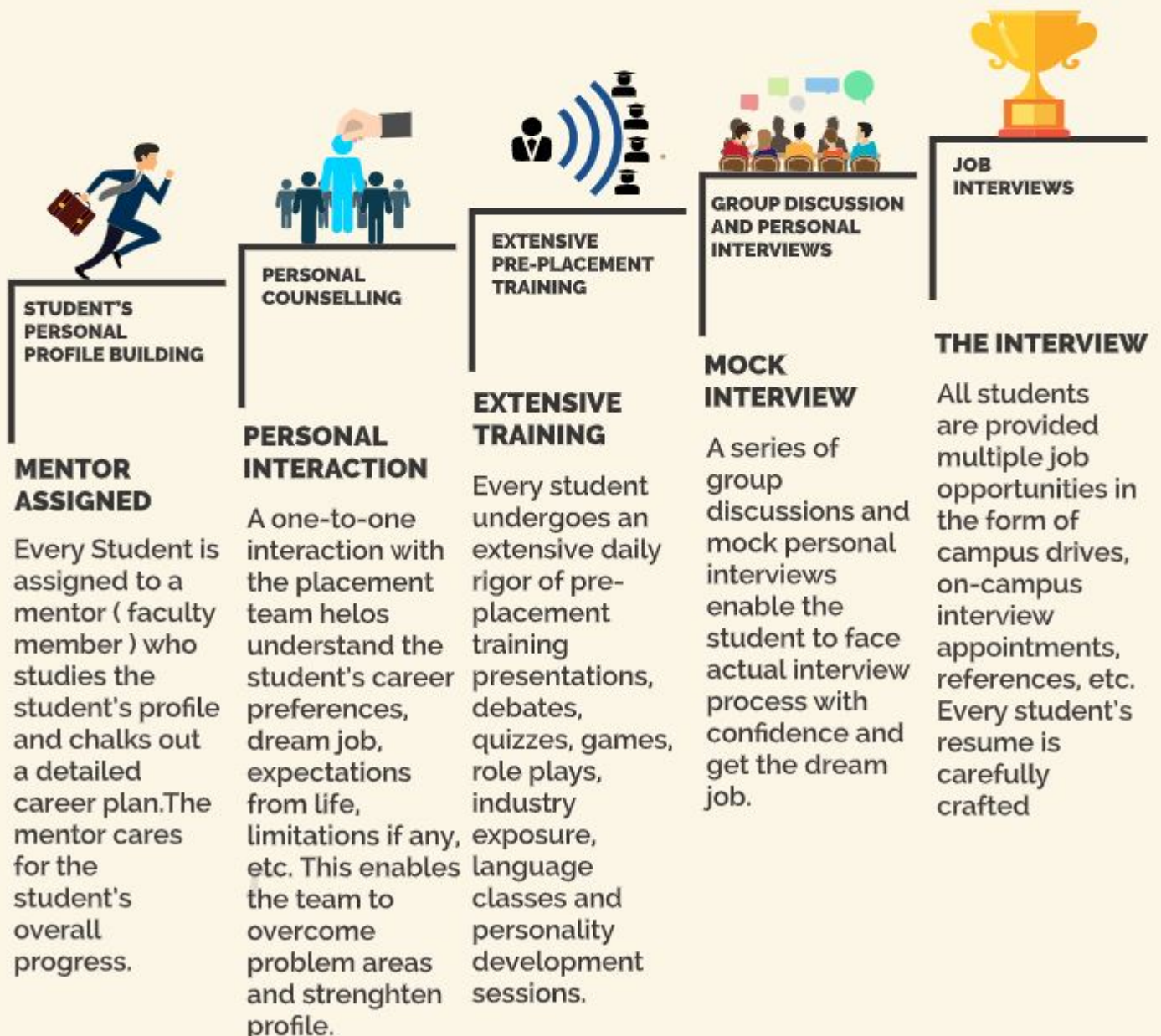
Dr. Prasad Daddikar
Director, BETGBS

MENTORING PROGRAM

The institute has a strong Mentoring program where by every student is assigned to a mentor who is a faculty member. Student is guided for various activities in academics, internship project and career planning.

Every faculty member has 5 students per batch. This enables the faculty member to hold routine meeting to understand the student's performance in class, difficulties if any, health issues and general well-being that goes a long way towards his/her success in the MBA programme. In addition to this, a qualified professional counselor is available on campus for Counseling.

PLACEMENT PROCESS



TEACHING STAFF



Dr. Prasad Daddikar
PhD., MBA, PGBDA
Director



Dr. A. R. Rotti
PhD., M. Com.
Professor



Dr. Padmapriya Katagal
Ph.D, PGDM
Asso. Professor



Mrs. Ranjana Chougule
(PhD), MBA
Asst. Professor



PROF. Manikchand A Bastwade
MBA, PGDMSM, KSET, (P.hD)
Asst. Professor



PROF. Vishwanath Nulimath
Bsc, MBA
Asst. Professor



Mrs. Bhagyashree Bhapri
MBA
Teaching Asso.

NON-TEACHING STAFF



Mrs. Shilpa Sheri
Office Superintendent
M.Com



Ms. Anusha Sangam
Librarian
Bsc, MLISc



Mr. Sushant S. Kalakuppi
System Admin
Dip in CS, BCA.



Mr. Pramod Borannavar
Accountant
B.Com.



ICE BREAKER



OUTBOUND



ROLE PLAYS



MGMT FESTS



CAMPUS DRIVES



DONATION CAMP



SOCIAL EVENTS



PLANTATION



SOCIAL RALLYS



ART MAKING

**ACTIVITIES TO DEVELOP KSA
BEYOND THE BOOKS/CLASSROOMS**



HOBBY CLUB



STREET PLAYS



UJJWAL 2020



FIT INDIA MOVEMENT



FRESHCO

LIFE @ BETGBS



SPORTS MEET



OUTBOUND



NSS RALLY



HERITAGE DRIVE



EVENT MGMT



**INTERNATIONAL
TOUR TO MALAYSIA**



VISIT TO NIN, HYDERABAD



VISIT TO NSE, MUMBAI



VISIT TO ISB, HYDERABAD



VISIT TO M&M, KOLHAPUR

INSTITUTE-INDUSTRY INTERFACE



NESTLE INDIA, MYSORE



RANE MADRAS, CHENNAI



FORD INDIA, CHENNAI



BHEL LTD., HYDERABAD



PARLE-G, HUBALLI

WORKSHOPS & SEMINARS



**SEMINAR BY BSE
ON INVESTMENTS**



**WORKSHOP ON
GOAL SETTING**



**WORKSHOP ON
VIDEO RESUME**



**PANEL DISCUSSION ON
UNION BUDGET**



**WORKSHOP ON
ENTREPRENEURSHIP**



**NATIONAL
HR CONCLAVE**



**NATIONAL
MGMT CONCLAVE**



**WORKSHOP ON
HEALTH & HYGIENE**



**NSE WORKSHOP ON
MUTUAL FUNDS**



**NATIONAL CONFERENCE
ON E-COMMERCE**

LAURELS OF BETGBS

Medalists to Rani Channamma University
MBA Programme



Kanchan K.
2nd Rank
MBA 2010-2012



Ranjana C.
4th Rank
MBA 2010-2012



R. Priyanka
2nd Rank
MBA 2013-2015



R. Asha
2nd Rank
MBA 2016-2018



Pooja S.
2nd Rank
MBA 2017-2019



Prajakta D.
3rd Rank
MBA 2017-2019

Students Proudly working with TOP Companies



EMINENT ALUMNI TESTIMONIALS

The relationship b/t faculty & students was very cordial, which gave me an opportunity to excel in my area of interest

Ms. Aishwarya K, BE, MBA
Batch 2016-18
Project Manager, Quest Inc.



BETGBS has transformed & helped me to build my career in research & academics.

Ms. Mary Chelli, BE, MBA
Batch 2013-15
Assistant Professor, VSM IMS

Since the first moment at BETGBS I was met with nothing but energy & enthusiasm.

Ms. Karishma C, BBA, MBA
Batch 2011-13
Senior Derivatives Dealer, Northern Trust



The 2 years spent at BETGBS were splendid & has helped me to grow better professionally.

Ms. Krishneshwari J, BBA, MBA
Batch 2011-13
Senior Research Associate, Northern Trust

The exposure provided to us to groom our self as future business leaders by the institute always raises the learning level giving 360 degree exposure which helped me to excel in life

Ms. R. Asha, BA, MBA
Batch 2016-18
Process Analyst, Cognizant



Two years at BETGBS was marvelous. It gave me platform to explore myself and given excellent turn to my career and Life.

Ms. Pooja S. B.Com., MBA
Batch 2017-19
HR Analyst, Pin Click

It was a great learning experience at BETGBS and came out with flying colors with all the support and guidance of all the faculty members and I am very much grateful to all the faculty and the institute.

Ms. Prajakta D. B.Sc., MBA
Batch 2017-19
HR Analyst, Pin Click



BETGBS just get the best out of you and set your path straight and serve as a bridge between you and your dreams. Whatever I'm today, BETGBS is one of the reason for me being here. Proud to be a Bharteshian

Ms. R. Priyanka, BBA, MBA
Batch 2013-15
Channel Specialist, Google Inc.

Contact Details

Dr. Prasad V. Daddikar

+91 9916771502

Asst. Prof. Ranjana Chougule

+91 7411776078

Asst. Prof. Manikchand Bastwade

+91 9902037686

Bharatesh Education Trust's Global Business School

B.C. 188, Old P.B. Road, Near Fort Road, Belagavi | Visit us: www.betgbs.in



www.betgbs.in



social.media@betgbs.in